



How should a young researcher navigate the AI landscape without feeling overwhelmed: *An “AI for Social Good” perspective*

MILIND TAMBE

Director, Ctr for Research on Computation & Society

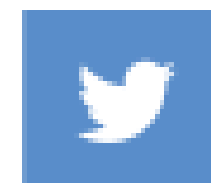
Harvard University



Google Research

Director “AI for Social Good”

Google Research India



@MilindTambe_AI

AI Explosion and its benefits

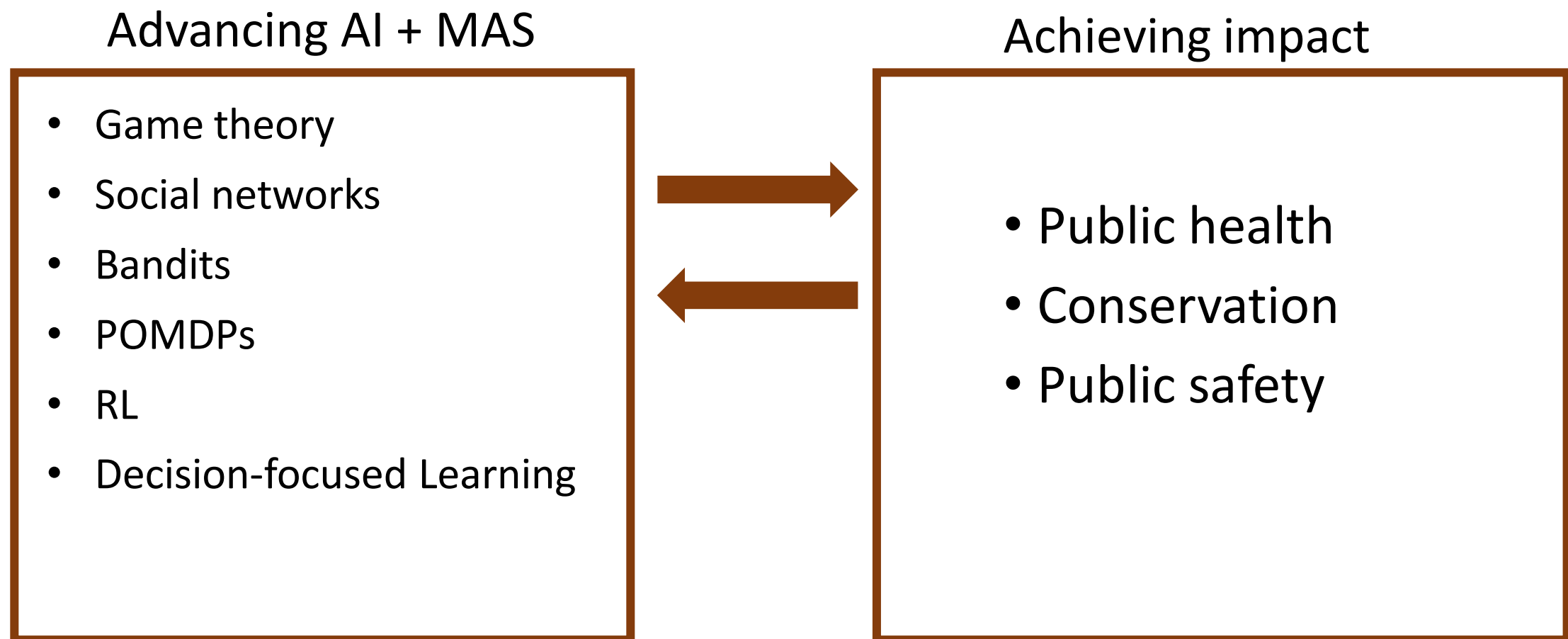


- *AI is not benefiting everyone equally*



“Social Impact Driven” Approach to AI Research

- *AI research & Social Impact go hand-in-hand*



AI & Multiagent Systems Research for Social Impact



Public Health



Conservation



**Public Safety
and Security**

Optimize Our Limited Intervention Resources

Examples

Public Health: Influence maximization & social networks

Conservation/Wildlife Protection: Green Security Games

Public Safety & Security: Stackelberg Security Games (brief)

Information dissemination & behavior change

Optimizing Limited Intervention (Social Worker) Resources

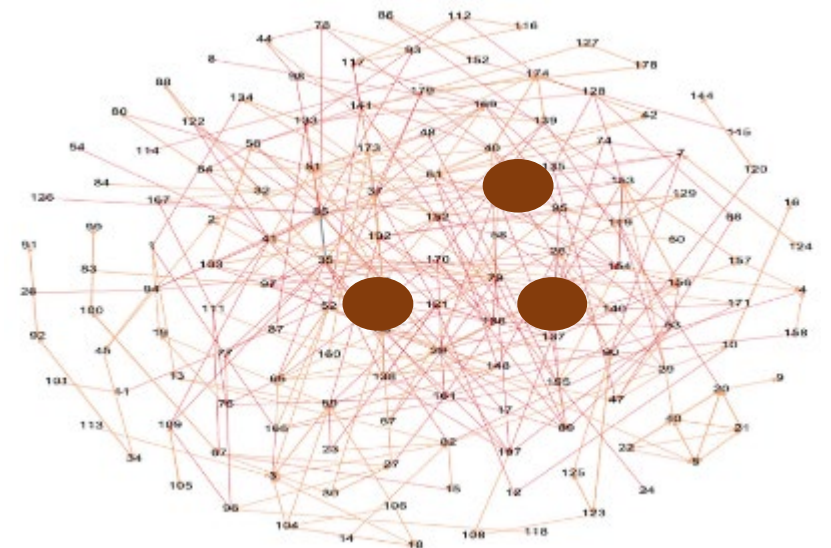
Preventing HIV in homeless youth in Los Angeles: Rates of HIV 10 times housed population

- **Shelters:** Limited number of peer leaders to spread HIV information in social networks
- “Real” face-to-face interactions; not Facebook etc



Research Advance: Influence Maximization in Social Networks

- Given:
 - Social network Graph G
 - Given edge propagation probabilities
 - Choose K “peer leader” nodes
- Objective: Maximize expected number of influenced nodes
- *Address new research questions:*
 - *Unknown social network; unknown propagation probabilities...*
 - *Social impact driven AI research*



First large-scale application of Influence maximization for public health (AAAI 2021)

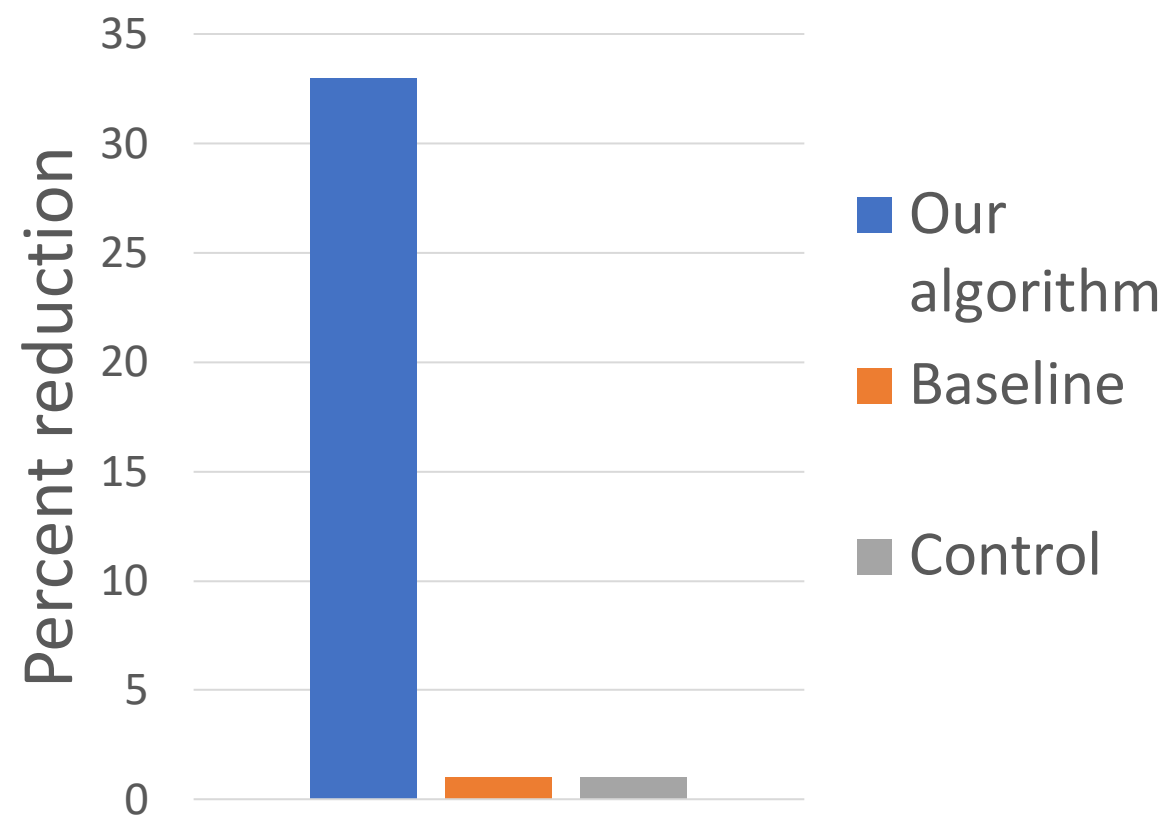
Results of study with 750 Youth experiencing homelessness in Los Angeles



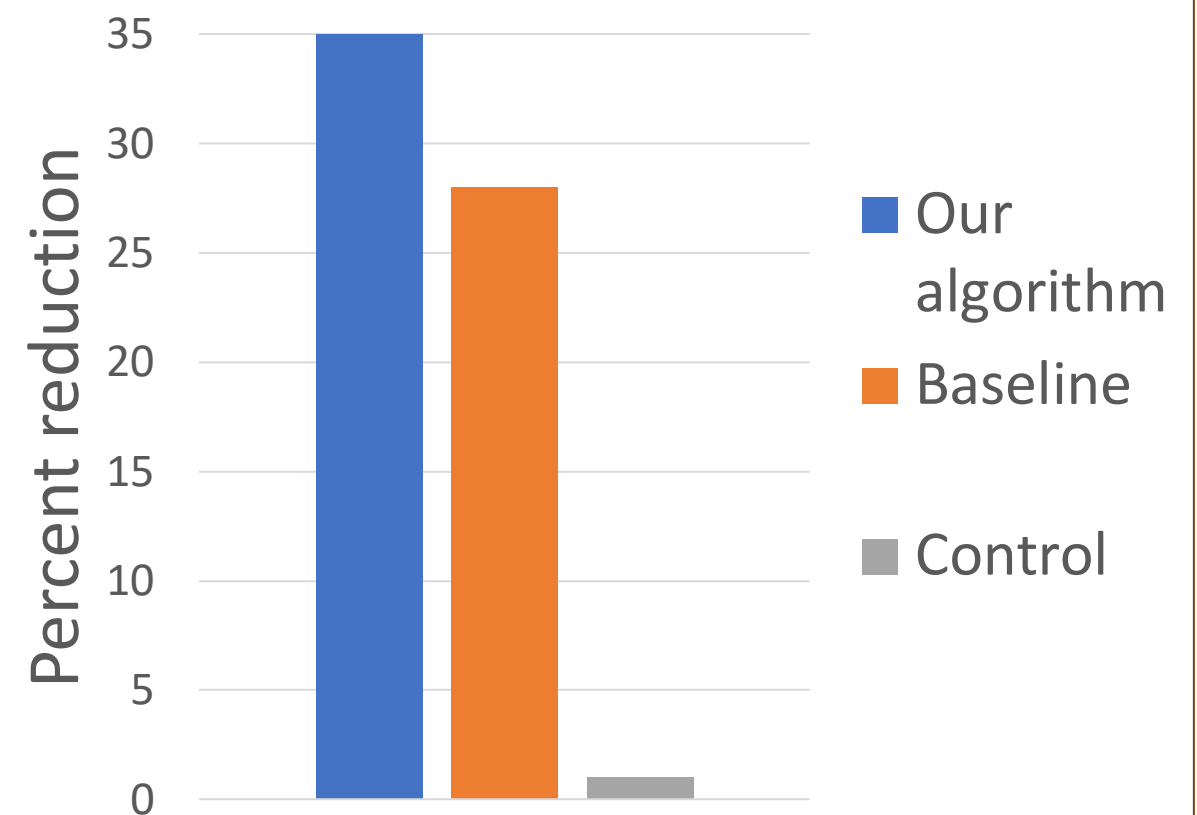
LOS
ANGELES
LGBT
CENTER



Reduction in condomless
anal sex (1 month)



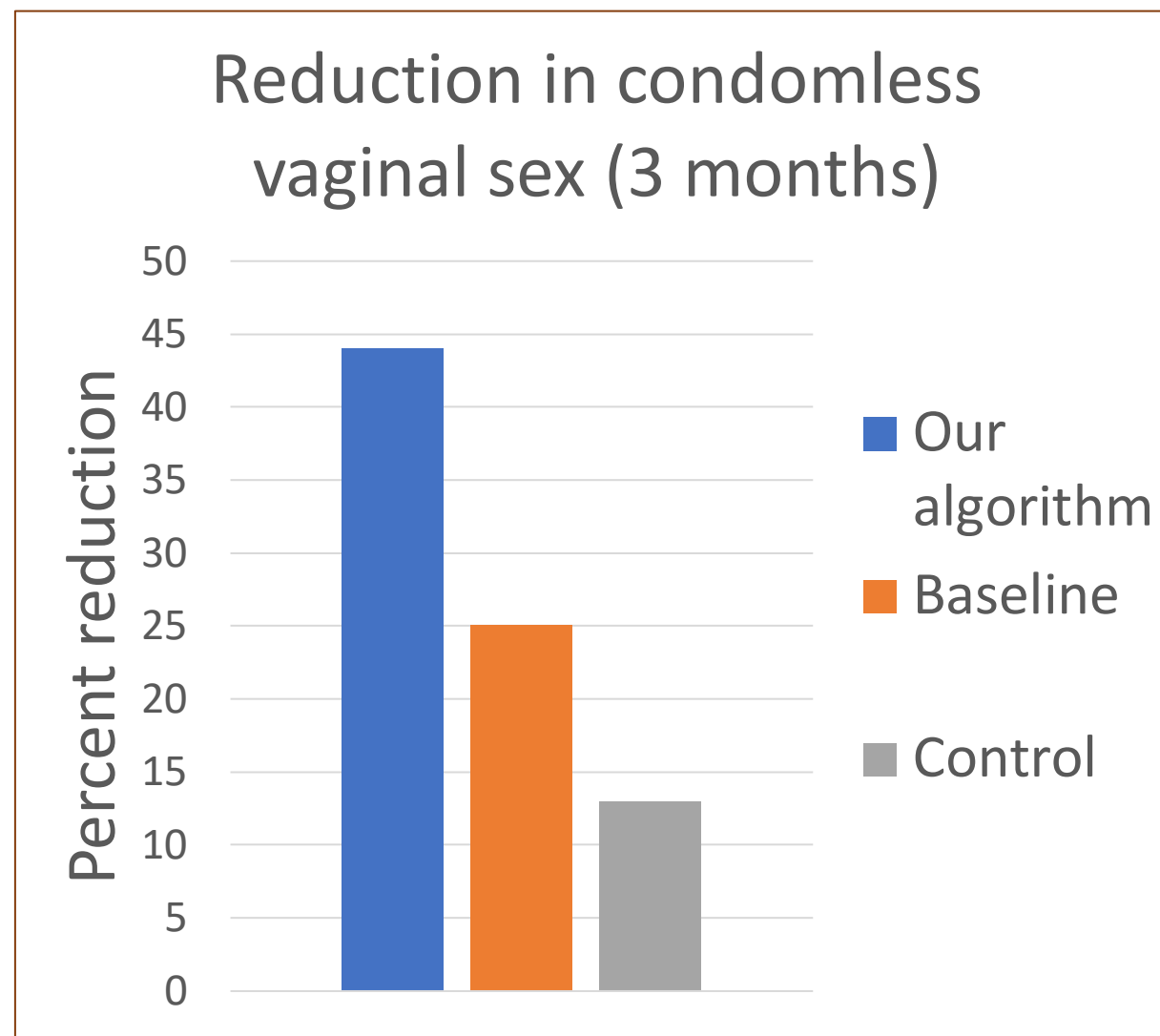
Reduction in condomless
anal sex (3 months)



Results of 750 Youth Study [with Prof. Eric Rice]



LOS
ANGELES
LGBT
CENTER



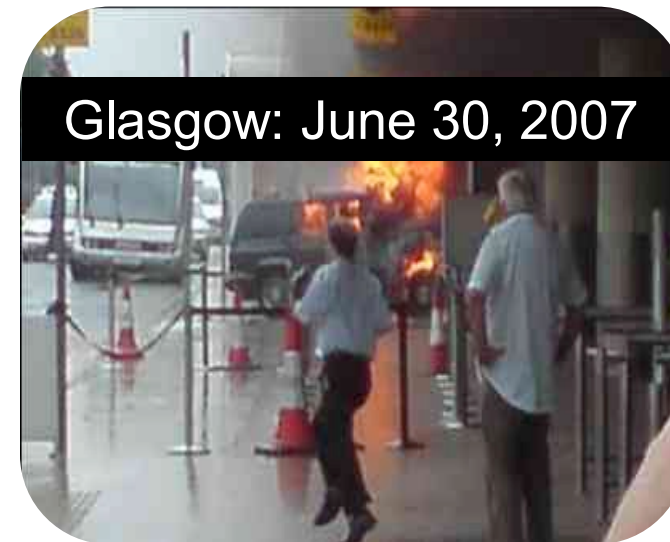
ARMOR Airport Security: LAX(2007)

Game Theory direct use for security resource optimization?

Erroll Southers



LAX Airport, Los Angeles



Research Advance: Game Theory for Security Resource Optimization

New Model: Stackelberg Security Games


Stackelberg: Defender commits to randomized strategy, adversary responds

Security game: Played on targets, payoffs based on calculated losses

New Algorithms: Solve massive scale games for optimal randomized allocation



Defender



Adversary

	Terminal #1	Terminal #2
Terminal #1	4, -3	-1, 1
Terminal #2	-5, 5	2, -1

First Application of Computational Game Theory for Operational Security

ARMOR deployed at Los Angeles Airport 2007



January 2009

- January 3rd *Loaded 9/mm pistol*
- January 9th *16-handguns,
1000 rounds of ammo*
- January 10th *Two unloaded shotguns*
- January 12th *Loaded 22/cal rifle*
- January 17th *Loaded 9/mm pistol*
- January 22nd *Unloaded 9/mm pistol*

Deployed Security Games Systems...



ARMOR

2007



IRIS

2009



PROTECT

2011



**Erroll Southers testimony
Congressional subcommittee**



**TSA testimony
Congressional subcommittee**



**US Coast Guard testimony
Congressional subcommittee**

Protecting Conservation Areas: Green Security Games

(IJCAI 2015)



Snare or Trap

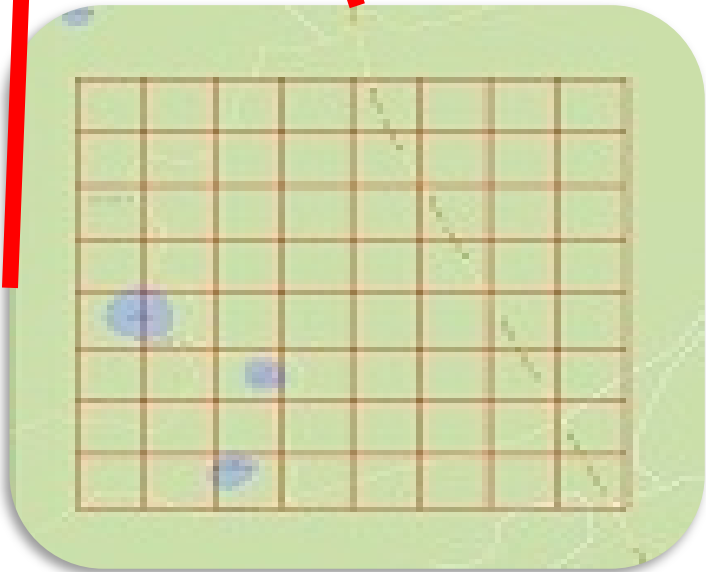


Wire snares



From Stackelberg Security Games to Green Security Games

(IJCAI 2015)



➤ Green security games



	Area1	Area2
Area1	4, -3	-1, 1
Area2	-5, 5	2, -1

PAWS Real-world Deployment

Cambodia: Srepok Wildlife Sanctuary

(ICDE 2020)



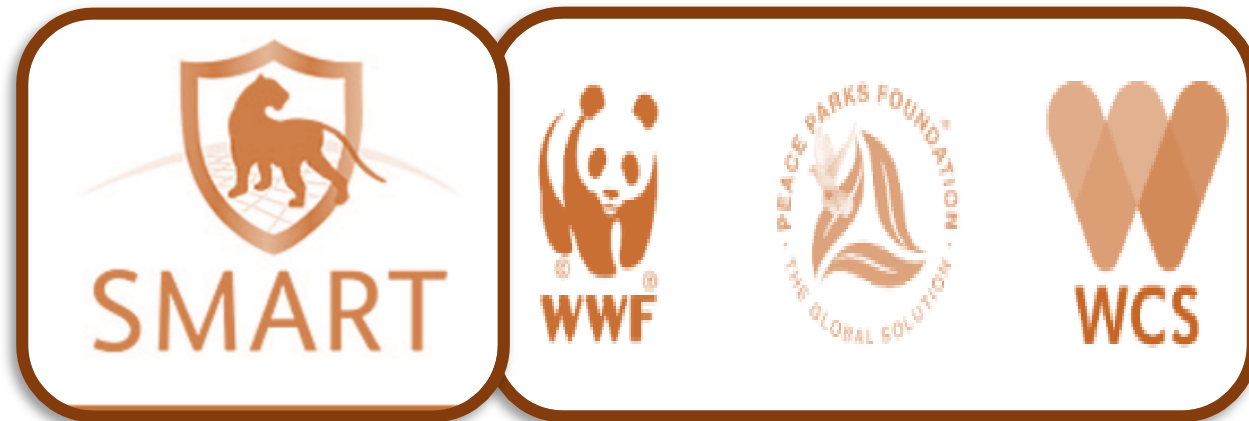
- *521 snares/month our tests*

VS

- *101 snares/month 2018*

First large scale application of AI for Wildlife Conservation

PAWS GOES GLOBAL with SMART platform!!



**Protect Wildlife
800
National Parks
Around the Globe**

Also: Protect Forests, Fisheries...

Interdisciplinary Partnerships



Empower non-profits to use AI tools; avoid being gatekeepers to AI4SI technology



ASHOKA TRUST FOR RESEARCH IN
ECOLOGY & THE ENVIRONMENT



Advice to New Researchers to Navigate AI Landscape: Social impact driven approach to AI research

Research has to be for something, not just writing more papers... 😊

In our research AI research and social impact has gone hand in hand:

- *Stackelberg security games, uncharted influence maximization, Green Security Games*

Team up with non-profits to find new AI challenges



@MilindTambe_AI



AI4SG Workshop - November 2019

Bringing AI researchers & NGOs together



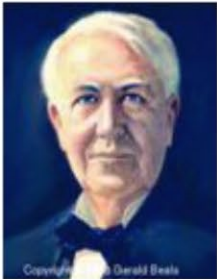


- NGOs, Academics (AI, Policy, Sociology), Googlers
- 25+ Proposals submitted in 2 days
- Selected six projects as combination NGO+academics +Googlers

Pasteur's Quadrant

"Social Impact Driven" Approach to AI Research

Donald E. Stokes Pasteur Quadrant

		Considerations of use?	
		x	✓
Quest for fundamental understanding?	✓	Niels Bohr 	Louis Pasteur 
	x		Thomas Edison 

Source: Donald E. Stokes, *Pasteur's Quadrant*, p. 73